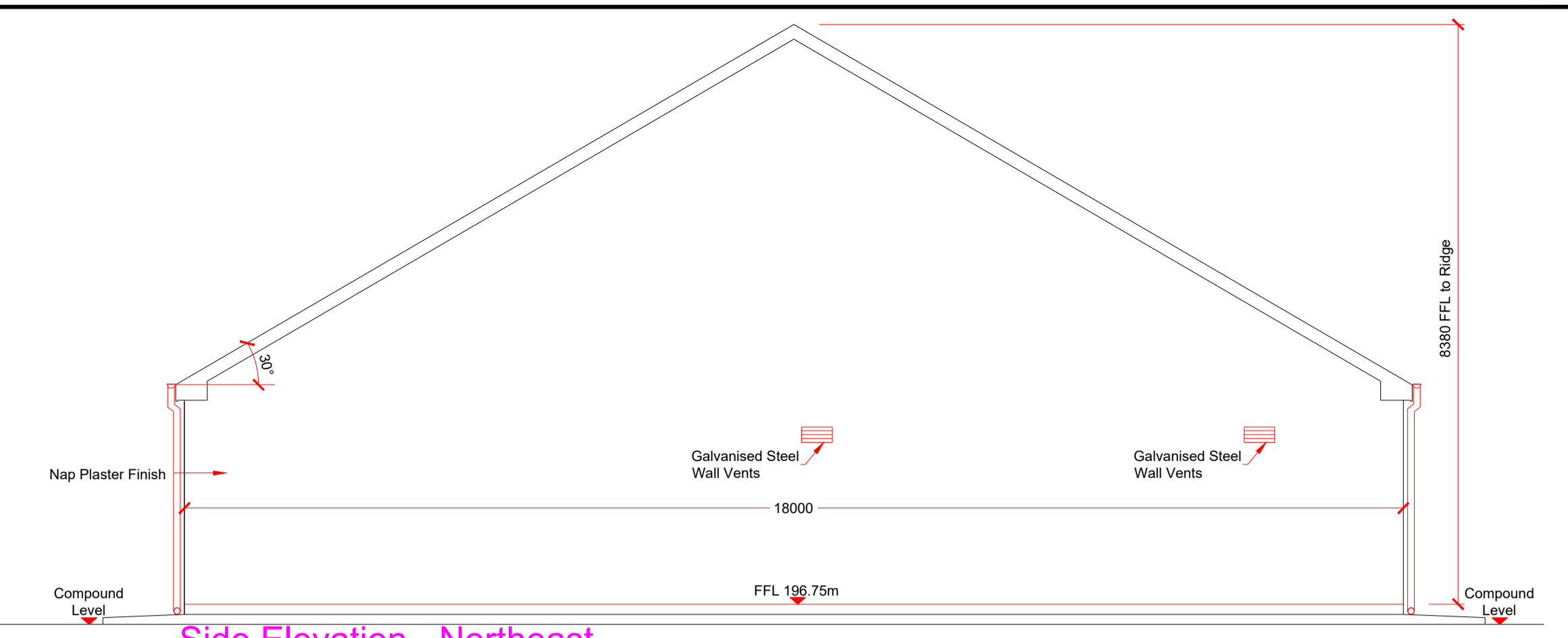
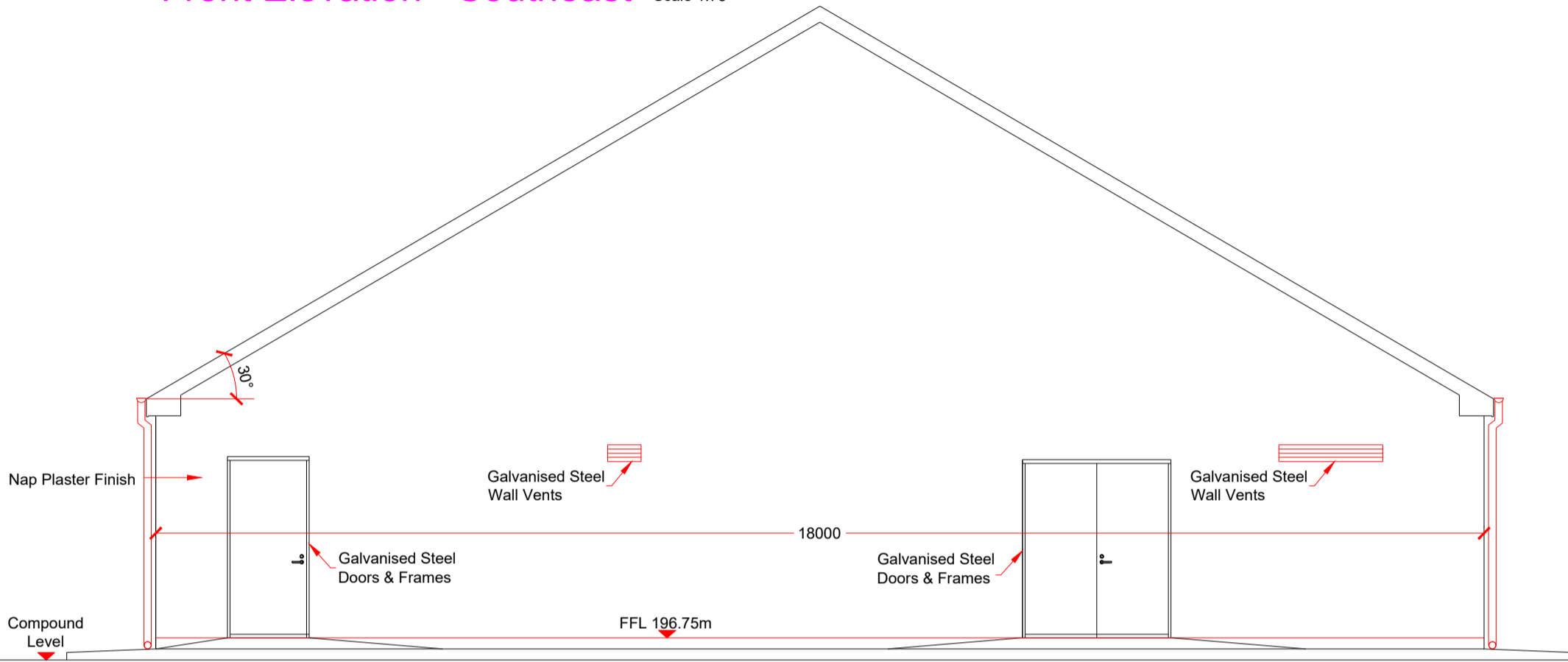


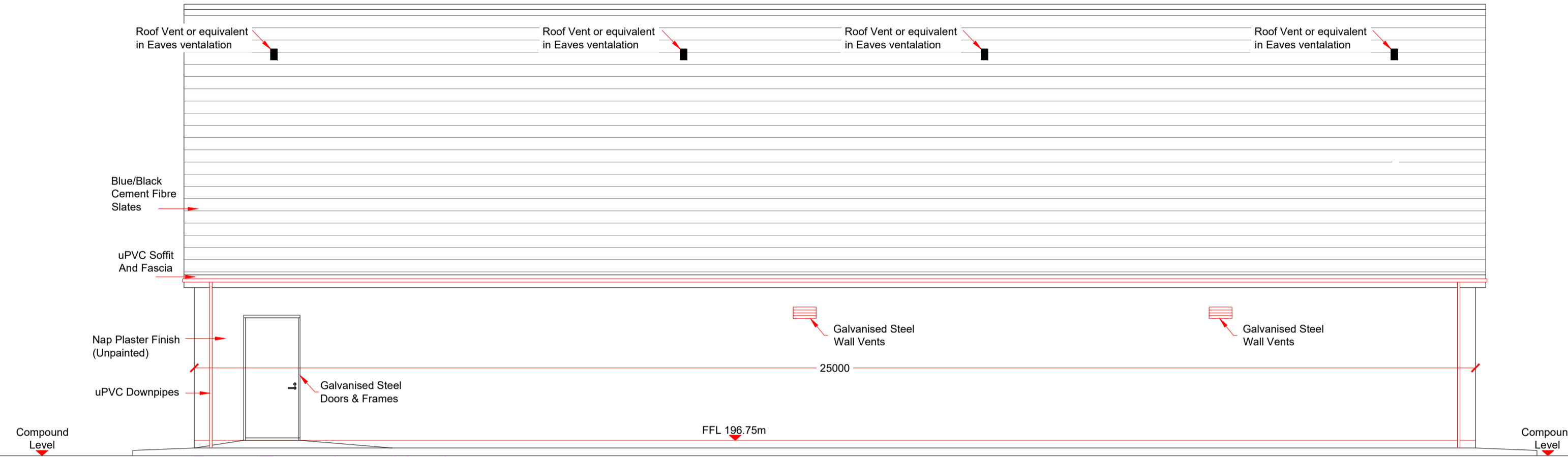
Front Elevation - Southeast Scale 1:75



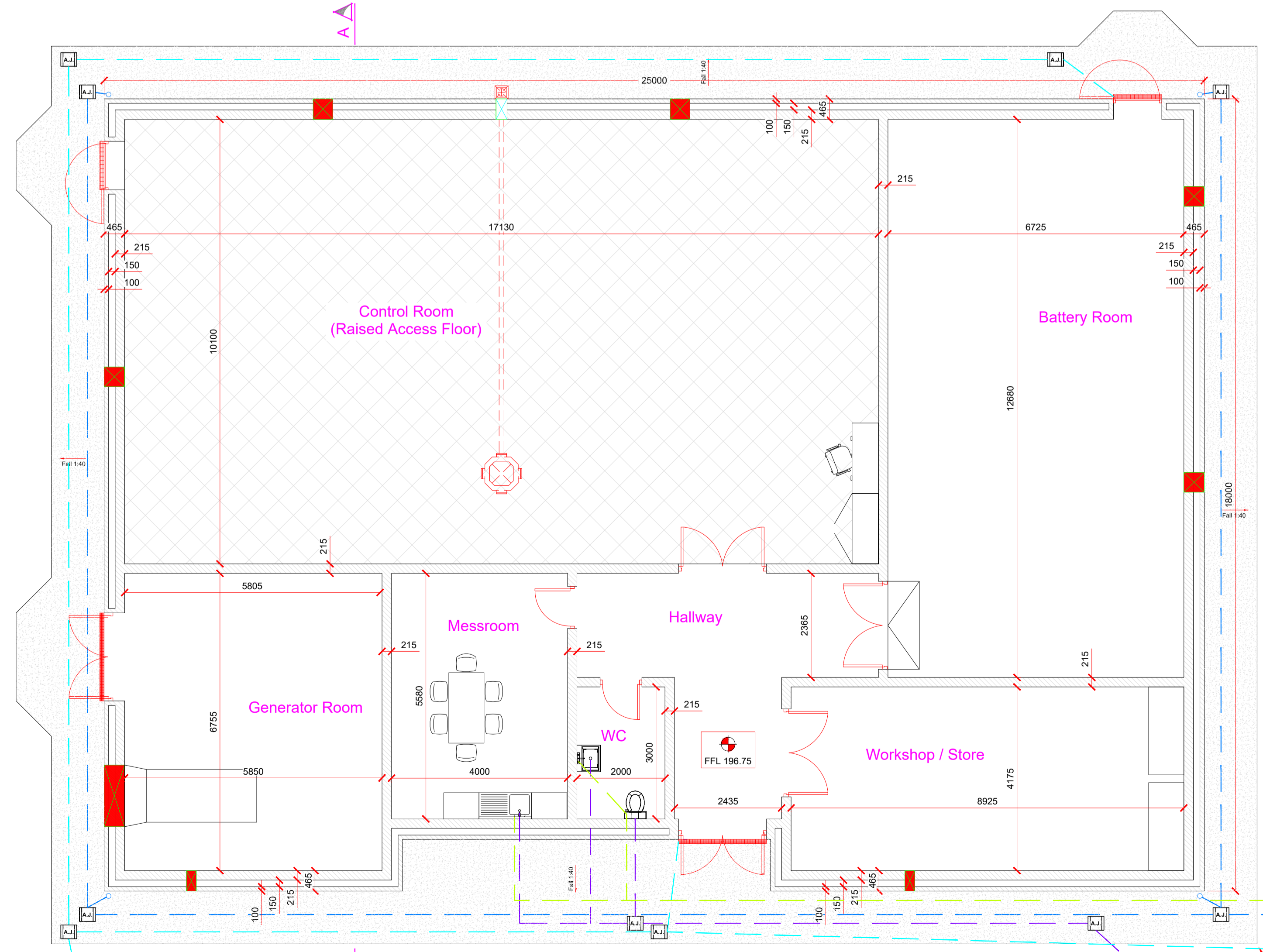
Side Elevation - Northeast Scale 1:75



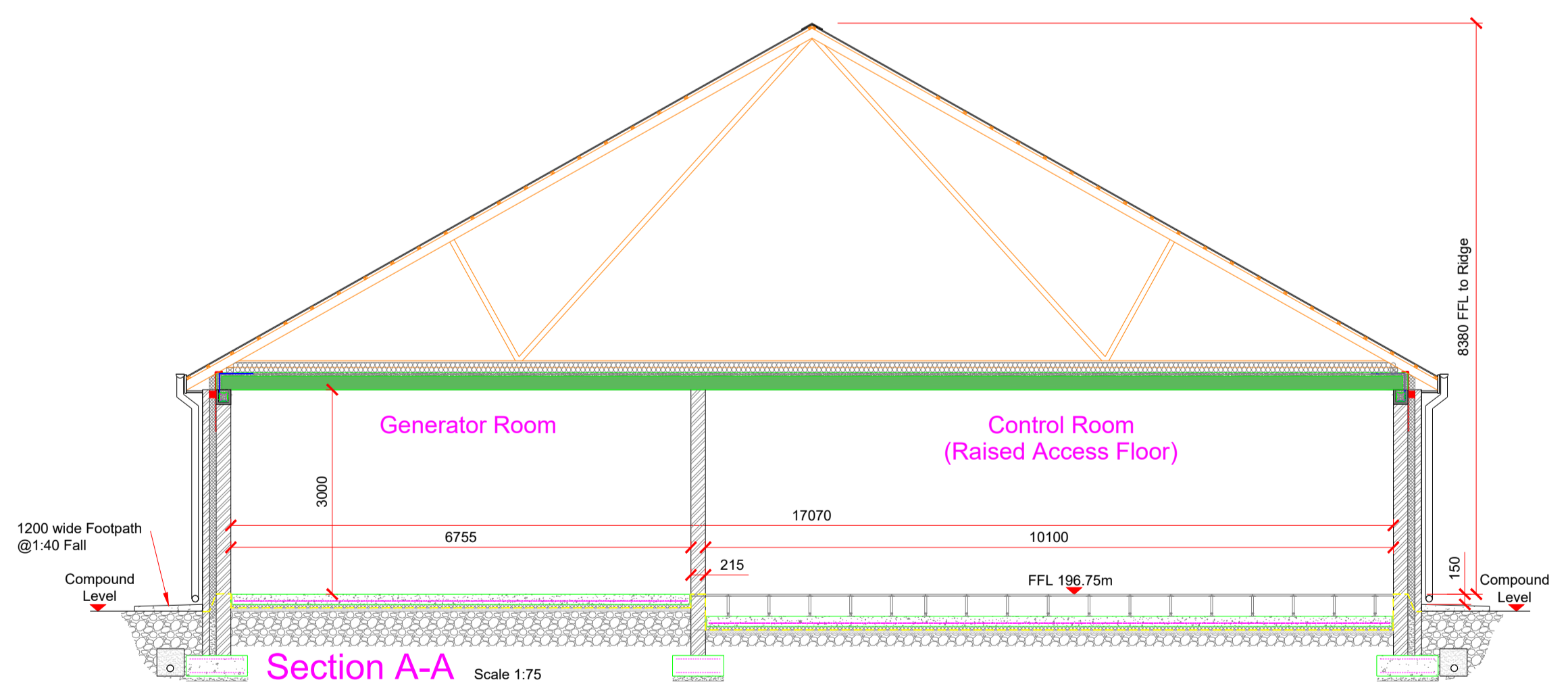
Side Elevation - Southwest Scale 1:75



Rear Elevation - Northwest Scale 1:75



Plan Scale 1:75



Section A-A Scale 1:75

- Notes :**
- All drawings are to be read in conjunction with all relevant Specifications, Bills of Quantities, Architectural, Services and Engineering drawings.
  - Any discrepancies between these documents shall be brought to the attention of the Engineer.
  - All dimensions are in millimetres, unless noted otherwise.
  - All levels are in metres related to Ordnance Datum.
  - Drawings are not to be scaled.

**LEGEND:**

- Concrete Footpath (Impermeable)
- 100mm Ø uPVC Foul Water Pipe
- 100mm Ø uPVC Storm Water Pipe (Clean)
- 100mm Ø uPVC Storm Water Pipe (Dirty)
- Water Supply from Harvesting Tank
- Foul Water AJ
- Foul Water Manhole
- Storm Water AJ (Clean)
- Storm Water AJ (Dirty)

Rev.	Date	Description	JK	CM	HBR
A	03.07.2020	Issued For Planning			
					by ch'd lapp

Project  
Carrowagowan Wind Farm

Title  
Eirgrid Substation Building  
Plan, Elevations & Section

Client  
**COILLTE**

**Malachy Walsh and Partners**  
Consulting Engineers  
Cork | Tralee | London | Limerick

Reen Point,  
Blennerville,  
Tralee,  
Co. Kerry

Tel: +353 (0)66 7423404  
Fax: +353 (0)66 7126586  
E-mail: tralee@mwp.ie

Drawn	NT	18.11.2019	Drg. No.	19107-5052	Rev.	A
Ch'd (DO)	JK	18.11.2019				
Ch'd (Eng)	CM	18.11.2019				
Approved	JL	18.11.2019				

To Class 1 Full Retention Separator, Refer to dwg 19107-5054 for detail

To Foul Waste Holding Tank, Capacity 5m<sup>3</sup>, vented to the atmosphere with High Level Alarm, Refer to dwg 19107-5053 for detail

Rainwater Harvesting Tank, Refer to dwg 19107-5053 for detail

Overflow